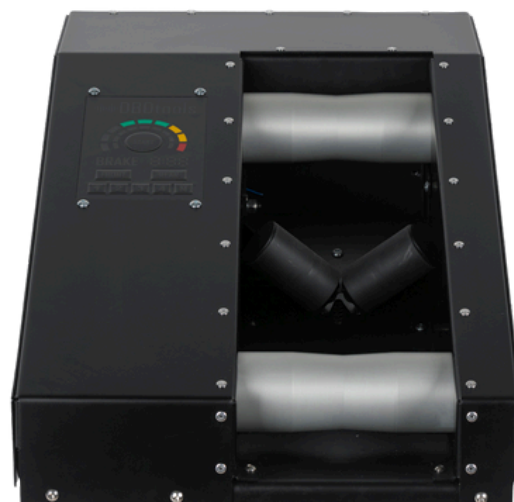


# OLLIE-B

## All about OLLIE-B

Since brake bedding-in is a procedure that is always done by feel, there is a lot of room for error... and at the same time room for improvement.



### Meet Ollie-B - a brake pad bedding-in machine.

Ollie-B is an innovative device that makes sure brand-new brake pads are functioning properly. Delivering consistent results through pre-programmed protocols, it improves stopping while also increasing longevity of the pads. This will satisfy even the most demanding customers, that are looking for a job perfectly done.

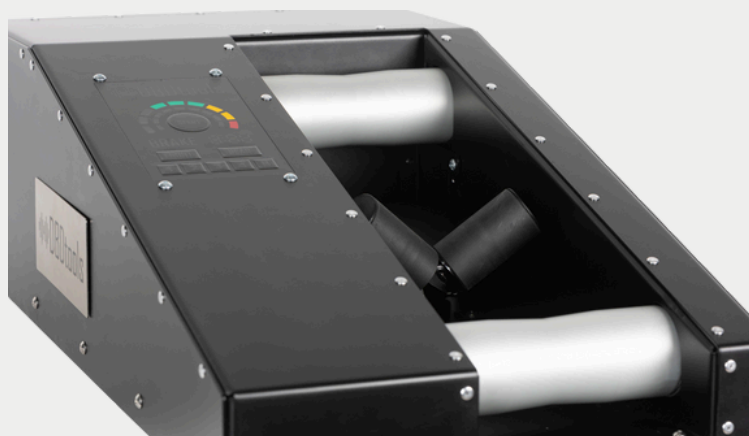
## Benefits

### For the shop

- More efficient than riding around
- Customer satisfaction
- Not weather-dependent
- Repeatable result
- Increased shop reputation

### For the rider

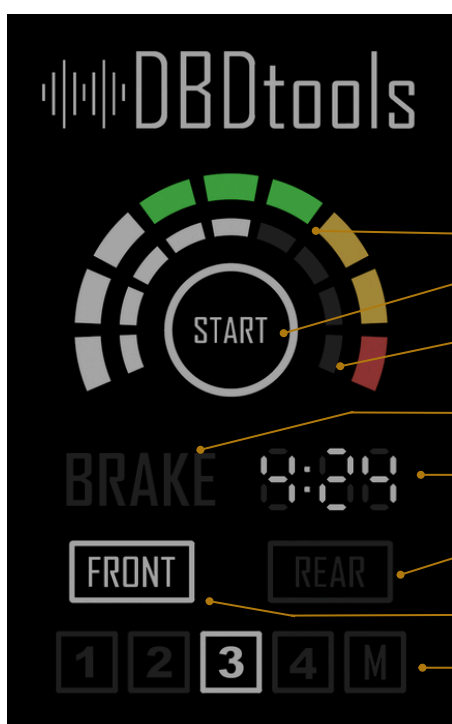
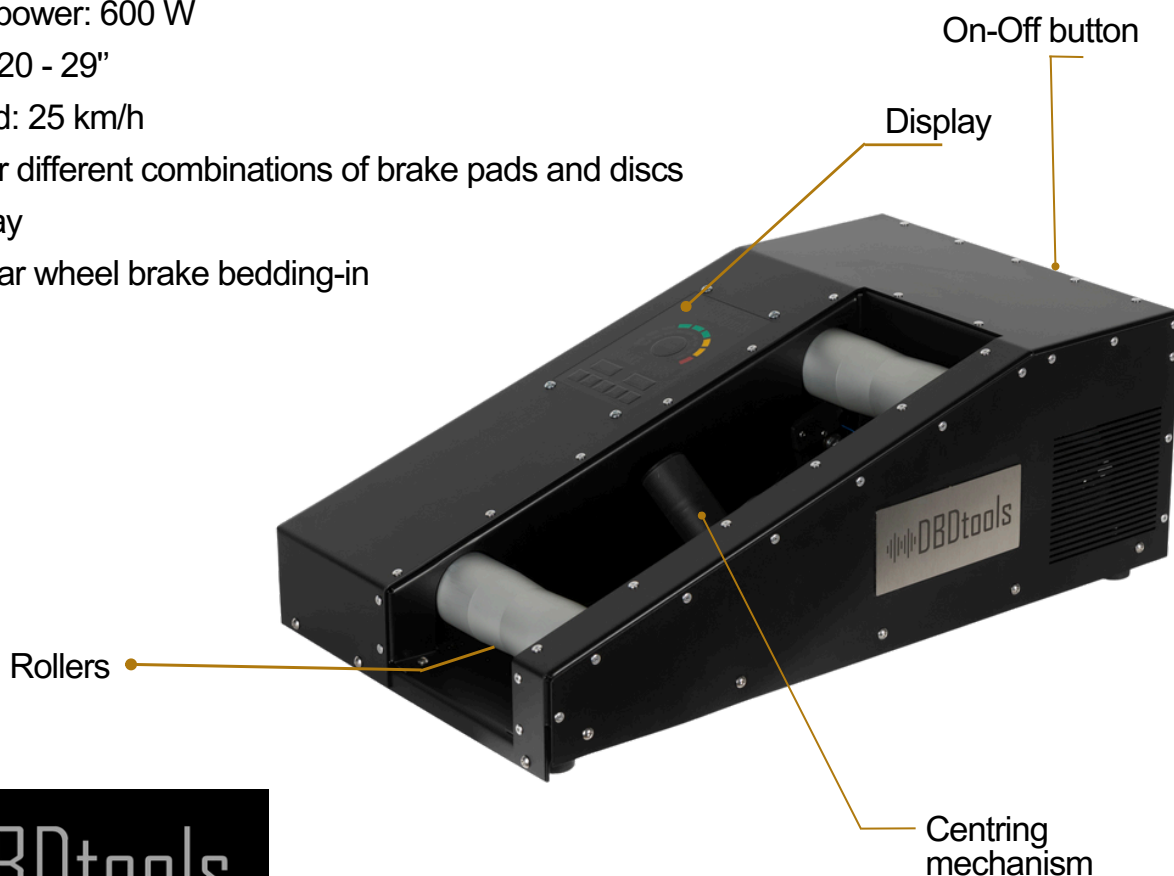
- Improved braking performance
- Increased pad lifespan
- Controlled braking power
- No more squeaky brakes
- Confidence in a job-well done



## SPECIFICATIONS

SKU: DBD030B

- Dimensions: 632 x 366 x 230 mm (LxWxH)
- Weight: 28 kg
- Continuous power: 600 W
- Wheel size: 20 - 29"
- Wheel speed: 25 km/h
- Programs for different combinations of brake pads and discs
- Power display
- Front and rear wheel brake bedding-in
- Auto-Start
- Input: 220 V



- POWER indicator** (shows how hard to pull the brake lever)
- START button** (or use Auto Start)
- Time remaining** (in the brake/release cycle)
- BRAKE indicator** (shows when to pull the brake lever)
- Total time remaining** (in the bedding-in process)
- REAR button** (when bedding in the rear wheel brakes)
- FRONT button** (when bedding in the front wheel brakes)
- Protocol selection** (Based on types of discs and brake pads)

## How it works?

1. Turn on the machine
2. Select which wheel you are working on (FRONT/REAR button)
3. Select appropriate program (depending on the disk size and brake pad combination)
4. Place that wheel on the rollers (it will start automatically)
5. Ollie-B tells you how much to pull on brake lever and when to release it
6. Repeat the process set number of times
7. Turn the bike around and repeat the process with the other wheel.

## What is bedding-in?

Brand new brake pads nor the rotors have flat contact surfaces. Some brake pad material must be transferred to the rotor to ensure a large contact area, as well as increase the friction coefficient. The transfer must be gradual, with several cycles to allow for cooling between periods of braking. This process ensures optimal friction, reduces squealing, and minimizes the risk of uneven wear or glazing. Properly bedding in new brake pads is crucial for achieving maximum braking power and extending their lifespan.

